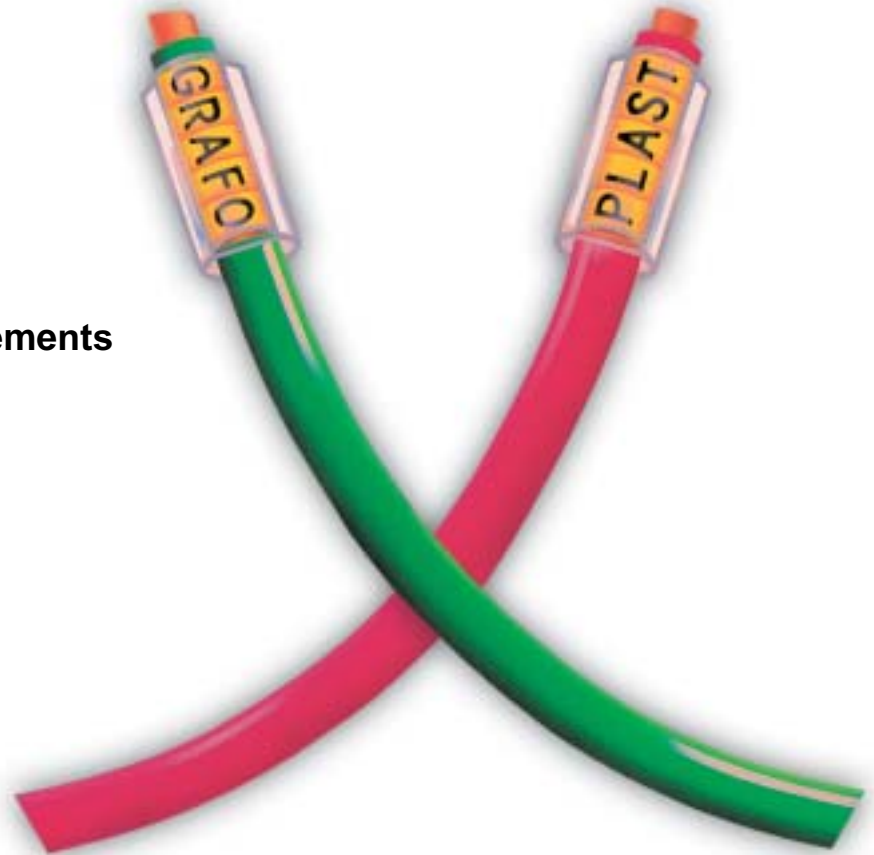




# T R A S P

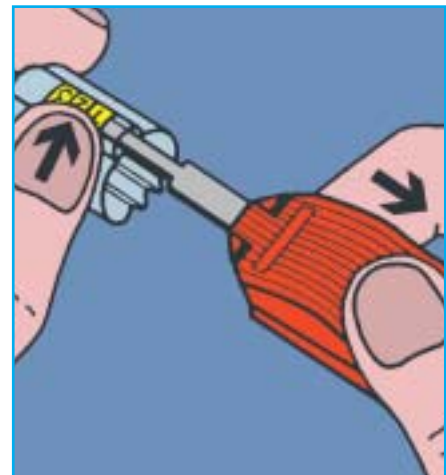
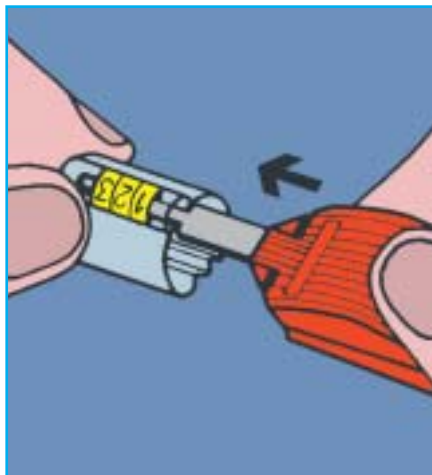
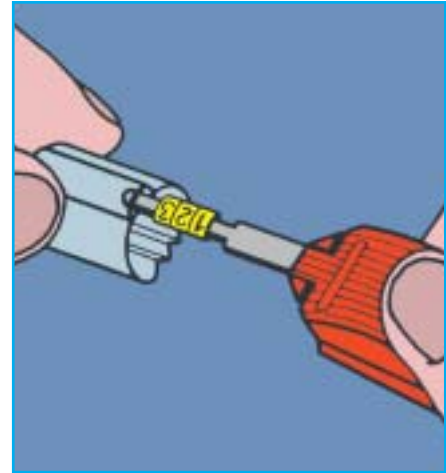
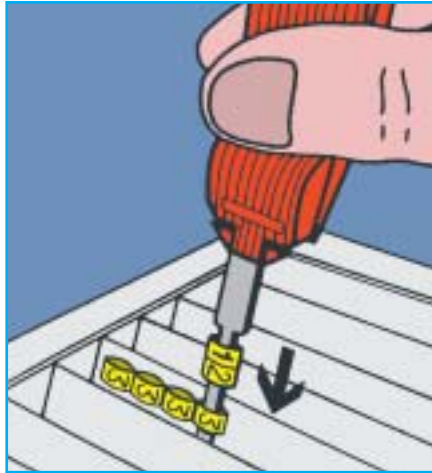
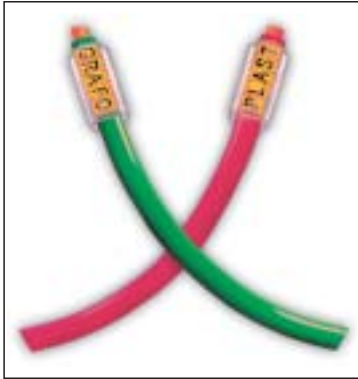
The TRASP system designed to provide a complete solution to the marking requirements of electrical instrumentation and data applications



## TRASP SYSTEM

Trasp is the only manual system that can identify all types of cables, cores and components found within control and electrical equipment. The one simple system allows marking to be carried out either prior to or post termination. Characters remain constant throughout the process. The only things that change are the carriers used. This depends on the core, cable or component marking requirement. The advantages of the Trasp system:

- One system marks all;
- Incredible saving in installation time;
- Quick, effective and userfriendly, with vast reductions in stock holding.

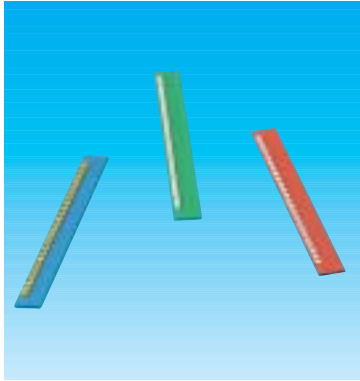




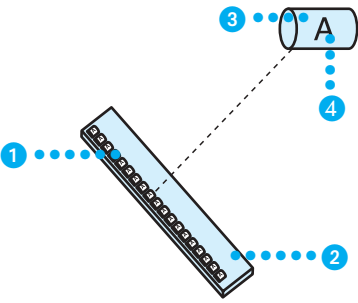







## The marking operation

Simply load the strips of characters into the strip tray. Using the marking tool select individual characters exactly as they are read from the schedule. Once the ident has been selected simply insert it into the recess on the appropriate carrier. Slight pressure from the thumb is sufficient to assist with the removal of the tool.

The carrier can then be attached to the core, cable or component.

Should any changes need to be made characters can be easily removed using the removal hook and the process can be repeated.



#	117	#		
		<b>117 / G</b>	mm 3,0	50 (1200)
		<b>117 / M</b>	mm 2,3	50 (1200)
		<b>117 / P</b>	mm 1,8	50 (1200)
		<b>117 / G CCOD*</b>	mm 3,0	50 (1200)
		<b>117 / M CCOD*</b>	mm 2,3	50 (1200)
		<b>117 / P CCOD*</b>	mm 1,8	50 (1200)
		<b>BL / 117 G</b>	mm 3,0	10 (240)
		<b>BL / 117 M</b>	mm 2,3	10 (240)
		<b>BL / 117 P</b>	mm 1,8	10 (240)
	1 2 PVC			
	UL-94 Class V0		3 Orange, White, Blue, Yellow Grey, Brown, Black, Pink Red, Green, Violet.	
	-50 ÷ +80 °C		4 Black, Red, White,	
	Acids - Water - Oils - Powder			
	Absence of toxic substances			
	TRASP			
		*CCOD = each pack contains 10 strips of different colours with numbers from 0 to 9		

LEGENDA

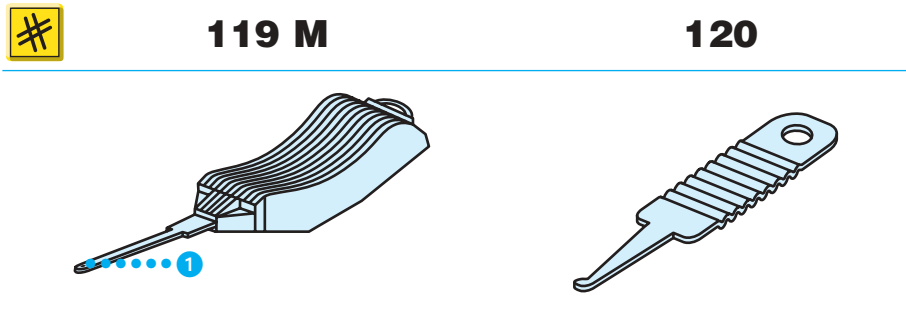
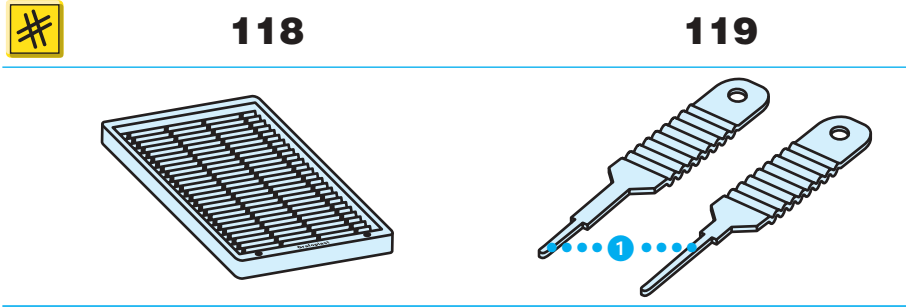
## Alphanumeric strips

The strips consist of 24 equally marked elements, attached vertically onto a plastic holder. The characters available include the 26 letters of the alphabet, in both upper and lower case, numbers (from 0 to 9), and 28 symbols, with 11 background colours.

Standard elements: Black characters on white or yellow background. International colour code is also available for numbers.



How to order



#					
118	PP	mm 147x190x18	lack	TRASP	1
119 / 15U	Al	1 15	Metal	TRASP	5
119 / 30U	Al	1 30	Metal	TRASP	5
119 M / 15	Al/PP	1 15	Orange	TRASP	1
119 M / 30	Al/PP	1 30	Orange	TRASP	1
BL 119 M15U	Al/PP	1 15	Orange	TRASP	6
120	Al		Metal	TRASP	5

### Strip tray

The strip tray, made from robust plastic material, is the container into which the strips of characters are loaded, and is absolutely necessary for the correct use of the TRASP system. The slots in the strip tray are angled to allow an easy extraction of the marking elements.

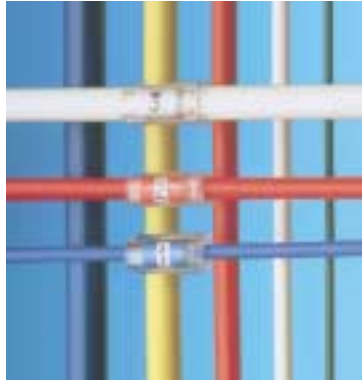
The strip tray holds 25 strips of any type of character (letters, numbers, symbols, or colours) as required.

### Marking tool

The marking tool is an essential tool for selecting elements from the strip tray and inserting them into the holders.

### Removal Hook

The removal hook allows quick removal of elements inserted into the holders.



#	101 ÷ 116	#	Ø	📦
		101 /10	mm 1 ÷ 2	1.000
		101 /15		1.000
		101 /23		1.000
		101 /30		500
		101 /MT		1x25 m
		102 /10	mm 2 ÷ 3	1.000
		102 /15		1.000
		102 /23		1.000
		102 /30		500
		102 /MT		1x25 m
		103 /10	mm 3 ÷ 4	1.000
		103 /15		1.000
		103 /23		500
		103 /30		500
		103 /MT		1x25 m
		104 /10	mm 4 ÷ 5	1.000
	104 /15		1.000	
	104 /23		500	
	104 /30		500	
	104 /MT		1x25 m	
	105 /10	mm 5 ÷ 6	1.000	
	105 /15		1.000	
	105 /23		500	
	105 /30		500	
	105 /MT		1x25 m	
	106 /10	mm 6 ÷ 7	500	
	106 /15		500	
	106 /23		200	
	106 /30		200	
	106 /MT		1x25 m	
	107 /10	mm 7 ÷ 8	500	
	107 /15		500	
	107 /23		200	
	107 /30		200	
	107 /MT		1x25 m	
	108 /10	mm 8 ÷ 10	500	
	108 /15		500	
	108 /23		200	
	108 /30		200	
	108 /MT		1x25 m	
	109 /10	mm 10 ÷ 12	500	
	109 /15		500	
	109 /23		200	
	109 /30		200	
	109 /MT		40x0,5 m	
	110 /10	mm 12 ÷ 14	500	
	110 /15		500	
	110 /23		200	
	110 /30		200	
	110 /MT		40x0,5 m	
	111 /10	mm 14 ÷ 16	200	
	111 /15		200	
	111 /23		200	
	111 /30		100	
	111 /MT		40x0,5 m	
	112 /10	mm 16 ÷ 18	200	
	112 /15		200	
	112 /23		100	
	112 /30		100	
	112 /MT		40x0,5 m	
	113 /10	mm 18 ÷ 20	200	
	113 /15		200	
	113 /23		100	
	113 /30		100	
	113 /MT		40x0,5 m	
	114 /10	mm 20 ÷ 22	100	
	114 /15		100	
	114 /23		100	
	114 /30		50	
	114 /MT		20x0,5 m	
	115 /10	mm 22 ÷ 25	100	
	115 /15		100	
	115 /23		50	
	115 /30		50	
	115 /MT		20x0,5 m	
	116 /10	mm 25 ÷ 30	50	
	116 /15		50	
	116 /23		50	
	116 /30		50	
	116 /MT		20x0,5 m	

- mm 10 ÷ 15 ÷ 23 ÷ 30 ÷ 500 ÷ 25.000
- PVC
- UL-94 Class V0
- 50 ÷ +80 °C
- Acids ÷ Water ÷ Oils ÷ Powders
- Transparent
- TRASP, PLOTTER SYSTEM SI2K

## 100 Series Transparent Sleeve

The sleeve can be slipped over a core or cable quicker than any other type of holder. It consists of a length of self-extinguishing transparent plastic material and contains two cavities. One covers the insulation and the other holds the marking elements. The chemical characteristics of the material make this product resistant to water, oils, powders and acids, and at the same time protects the elements from any contamination. Preferred method of marking prior to termination.

LEGEND



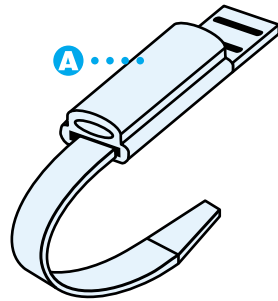
Comparative chart of cable diameters



#	121-122-123 121X-122X	#				
		121 /10	AL/PVC	mm 10	mm 10 + 50	200
		121 /15	AL/PVC	mm 15	mm 10 + 50	200
		121 /23	AL/PVC	mm 23	mm 10 + 50	200
		121 /30	AL/PVC	mm 30	mm 10 + 50	200
		121X	AI	without sleeve	mm 10 + 50	200
		121X /10	AI/PVC	mm 10	mm 10 + 50	200
		121X /15	AI/PVC	mm 15	mm 10 + 50	200
		121X /23	AI/PVC	mm 23	mm 10 + 50	200
		121X /30	AI/PVC	mm 30	mm 10 + 50	200
		122 /10	AL/PVC	mm 10	mm 10 + 65	100
		122 /15	AL/PVC	mm 15	mm 10 + 65	100
		122 /23	AL/PVC	mm 23	mm 10 + 65	100
		122 /30	AL/PVC	mm 30	mm 10 + 65	100
		122X	AI	without sleeve	mm 10 + 65	100
		122X /10	AI/PVC	mm 10	mm 10 + 65	100
		122X /15	AI/PVC	mm 15	mm 10 + 65	100
		122X /23	AI/PVC	mm 23	mm 10 + 65	100
		122X /30	AI/PVC	mm 30	mm 10 + 65	100
		123	AL	without sleeve	mm 10 +100	100

	UL-94 Class V0
	-50 ÷ +80 °C
	Acids+Water+Oils+Powders
	Metal / Transparent
	TRASP, PLOTTER SYSTEM S12K



## Aluminium and stainless steel straps

A strap that can be marked is the ideal solution for marking bundles of cables or particularly thick cables.

The strap (art. 121) can mark cables up to a diameter of 50 mm and is fitted with a sleeve to hold the marking elements (length 10/15/23/30 mm).

The strap (art. 122) is similar to art. 121, varying only in the length. This item can mark cables up to a maximum of 65 mm diameter.

The aluminium strap (art. 123) is 400 mm long and is not fitted with a sleeve.

The stainless steel straps (art. 121X and 122X) are also supplied without a sleeve.



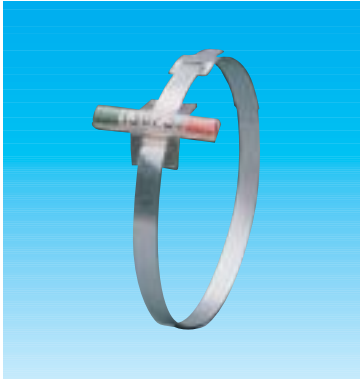
#	124	#	$\varnothing$	$\Delta$	
		124/10	mm 10 ÷ 50	mm 10	200
		124/15	mm 10 ÷ 50	mm 15	200
		124/23	mm 10 ÷ 50	mm 23	200
	Polyamide (strap)PVC (sleeve)				
	UL-94 Class V0				
	-40 ÷ +80 °C				
	Acids ÷ Water ÷ Oils ÷ Powders				
	Absence of toxic substances				
	Transparent (sleeve)/Black (strap)				
	TRASP, PLOTTER SYSTEM, SI2K				

**LEGEND**
**Polyamide strap**

The black polyamide PA 6/6 strap is suitable for identification of cables or bundles of cables up to a maximum of 50 mm diameter.

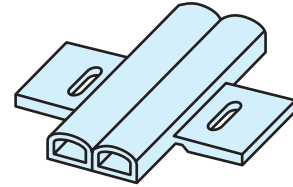
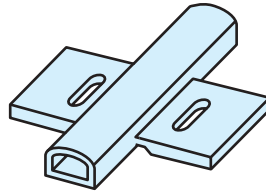
It is fitted with a sleeve.

This strap is particularly useful on computer ribbon cable



**130**

**830**



PVC



UL-94 Class V0

130/23

mm 23

200

130/30

mm 30

200



-50 ÷ +80 °C

830/30

mm 30

200



Acids ÷ Water ÷ Oils ÷ Powders



Transparent

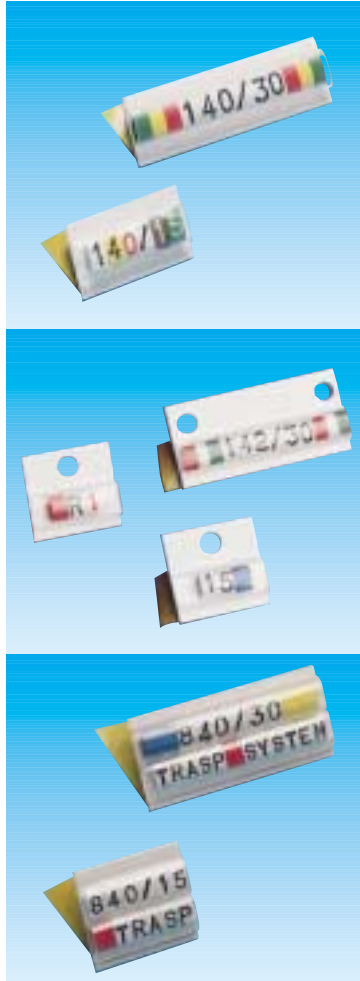


TRASP, PLOTTER SYSTEM, SI2K

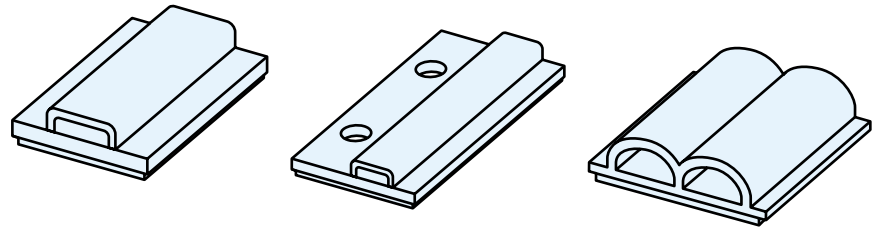
**Transparent longitudinal sleeve for cable tie**

Secured to the cable with a tie, this longitudinal sleeve allows the text to run parallel to the cables. Ideal also for marking bundles of cable and cables which require marking at regular intervals.





#	140	142	840
---	-----	-----	-----



	PVC/ACR			
	UL-94 Class V0	140 / 10	mm 10	500
		140 / 15	mm 15	500
	-50 ÷ +80°C	140 / 23	mm 23	200
		140 / 30	mm 30	200
	Acids + Water + Oils + Powders	140 / MT	mm 500	20
		142 / 15	mm 15	500
	Transparent/White	142 / 30	mm 30	200
		840 / 10	mm 10	200
	TRASP, PLOTTER SYSTEM, S12K	840 / 15	mm 15	200
		840 / 23	mm 23	100
		840 / 30	mm 30	100
		840 / MT	mm 500	20

LEGEND

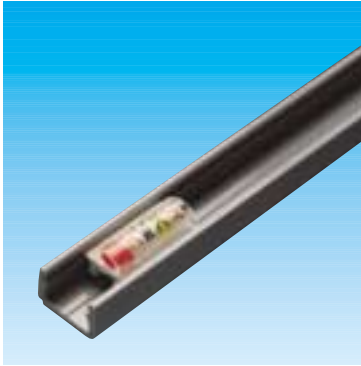
### Transparent self-adhesive holder

The self-adhesive holder solves the problems of marking onto surfaces that offer no other fixing possibilities.

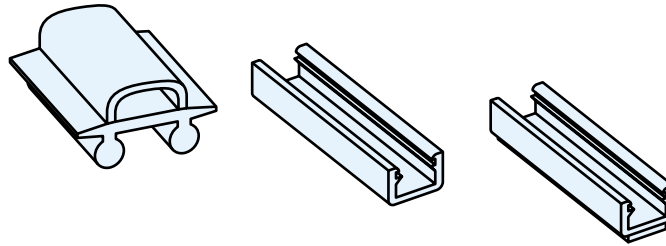
The marker cavity is made of soft transparent PVC and the holder has an adhesive base protected by a removable skin. Another marker (art. 142) is provided with holes in addition to the adhesive backing, so that it can also be attached by screws or rivets.

### Dual transparent self-adhesive holder

Ideally suited for longer idents.



#	<b>150</b>	<b>160/MT</b>	<b>161/MT</b>
---	------------	---------------	---------------



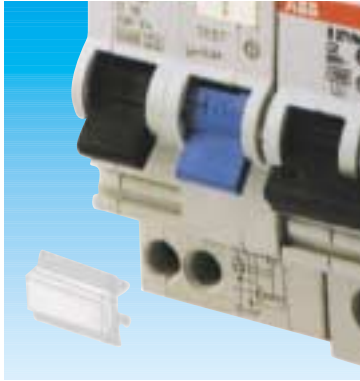
	UL-94 Class V0	#				
	-50 ÷ +80 °C	150 / 10	PVC	mm 10	Transparent/Grey	500
		150 / 15	PVC	mm 15	Transparent/Grey	500
	Acids+Water+Oils+Powders	150 / 23	PVC	mm 23	Transparent/Grey	200
		150 / 30	PVC	mm 30	Transparent/Grey	200
	TRASP, PLOTTER SYSTEM, SI2K	160 / MT	PVC	mm 500	Grey	20
		161 / MT	PVC/ACR	mm 500	Grey	20
		161 / MT1	PVC/ACR	mm 1000	Grey	10

### Marking

An insert or plotted tag is clipped into the channel by simple pressure.

### Channel

The channel is either attached by screws (art. 160/MT) or self-adhesive (art 161/MT), and is designed to hold the specific TRASP system inserts (art. 150), SI2000 system tags (art. SIHF44...) or SI2K...(SI2K0920...SI2K0935...)



#	152	#				
		152I /150	Finder/Lumberg		mm 15	200
		152I /250	Finder/Lumberg		mm 25	200
		152N /170	ABB		mm 17	200
		152N /340	ABB		mm 34	100
	PVC					
	UL-94 Class V0					
	-50 ÷ +80 °C					
	Acids ÷ Water ÷ Oils ÷ Powders					
	Transparent / White					
	TRASP, PLOTTER SYSTEM, SI2K					

LEGEND

### Clip-on holder for automatic circuit-breakers

The clip-on holders for circuit breakers allow the marking of Finder/Lumberg and ABB equipment in an efficient and long-lasting way.



#	155 ÷ 159	#			
		<b>155A /050</b>	Cabur	mm 5	1.000
		<b>155A /060</b>	Cabur	mm 6	1.000
		<b>155A /070</b>	Cabur	mm 7	1.000
		<b>155D /050</b>	Legrand Viking 1. Serie	mm 5	1.000
		<b>155D /060</b>	Legrand Viking 1. Serie	mm 6	1.000
		<b>155E /060</b>	Phoenix C.	mm 6	1.000
		<b>155G /050</b>	Siemens	mm 5	1.000
		<b>155L /050</b>	Weidmüller	mm 5	1.000
		<b>155L /055</b>	Weidmüller	mm 5,5	1.000
		<b>156A /075</b>	Cabur	mm 7,5	1.000
	PVC	<b>156A /077</b>	Cabur	mm 7,7	1.000
	UL-94 Class V0	<b>156A /090</b>	Cabur	mm 9	1.000
	-50 ÷ +80°C	<b>156D /080</b>	Legrand	mm 8	1.000
	Acids ÷ Water ÷ Oils ÷ Powders	<b>156E /080</b>	Phoenix C.	mm 8	1.000
	Transparent / White	<b>156L /080</b>	Weidmüller	mm 8	1.000
	TRASP	<b>156L /090</b>	Weidmüller	mm 9	1.000
		<b>157A /150</b>	Cabur	mm 15	500
		<b>157G /150</b>	Siemens	mm 15	500
		<b>157L /150</b>	Weidmüller	mm 15	500
		<b>158E /200</b>	Phoenix C.	mm 20	200
		<b>158G /200</b>	Siemens	mm 20	200
		<b>159G /250</b>	Siemens	mm 25	200

### Clip-on holder for terminal blocks

The part of this clip-on that snaps over the terminal is made of rigid PVC, while the sleeve that holds the marker is made of soft, transparent PVC.

This system facilitates identification of the commonest makes of terminal blocks, using the basic components of the TRASP system.



#	175	#			
		<b>175 A/15</b>	Cabur	mm 15	200
		<b>175 C/15</b>	Entrelec	mm 15	200
		<b>175 D/15</b>	Legrand Viking 1. Serie	mm 15	200
		<b>175 E/15</b>	Phoenix C. - Ilme	mm 15	200
		<b>175 G/15</b>	Siemens	mm 15	200
		<b>175 H/15</b>	Allen Bradley - Woertz	mm 15	200
		<b>175 L/15</b>	Weidmuller: SAK, WDU	mm 15	200
		<b>175 M/15*</b>	Sprecher+Sch. - Telemecan. - Wieland	mm 15	200
		PC			
	UL-94 Class V0				
	-50 ÷ +80 °C				
	Acids ÷ Water ÷ Oils ÷ Powders				
	Absence of toxic substances				
	Transparent				
	TRASP				

LEGEND

### Vertical clip-on holder for Terminal

The vertical polycarbonate holder, allows longer and clearer identification for terminal blocks.

\* Also suitable for Télémécanique LA1KN22 and CA2KN22 contactors

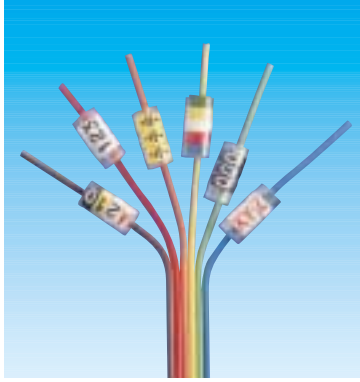


#	185	#			
		185 G/20	Siemens Klöckner-Möller	mm 20	200
		185 M/20	Télémécanique*	mm 20	200
	PC				
	UL-94 Class V0				
	-50 ÷ +80°C				
	Acids ÷ Water ÷ Oils ÷ Powders				
	Absence of toxic substances				
	Transparent				
	TRASP				

## Clip-on holder for contactors

The polycarbonate holder allows the rapid, clear and long-lasting marking of contactors using the basic components of the TRASP system.

\* Not suitable for Télémécanique LA1KN22 and CA2KN22 contactors



#	190	#		
		190 / 10	mm 10	1.000
		190 / 15	mm 15	1.000
		190 / MT	mm 25.000	1 x 25m
	mm 0,6 ÷ 1,2			
	PVC			
	UL-94 Class V0			
	-50 ÷ +80°C			
	Acids ÷ Water ÷ Oils ÷ Powders			
	Transparent			
	TRASP, PLOTTER SYSTEM, SI2K			
		other sizes available		

LEGEND

## Transparent sleeve for fine cores

With this sleeve it is extremely easy to mark fine cores in a clear and legible manner, using Trasp, SI2000 or SI2K elements.



#	201 ÷ 209	#	Ø	Gift
		201 /10	mm 1,5 ÷ 2,5	1.000
		201 /15		1.000
		201 /23		1.000
		201 /30		500
		201 /MT		1x25 m
		202 /10	mm 2 ÷ 4	1.000
		202 /15		1.000
		202 /23		500
		202 /30		500
		202 /MT		1x25 m
mm 10 ÷ 15 ÷ 23 ÷ 30 ÷ 500 ÷ 25.000		203 /10	mm 4 ÷ 7	500
PVC		203 /15		500
UL-94 Class V0		203 /23		500
-50 ÷ +80°C		203 /30		200
Acids ÷ Water ÷ Oils ÷ Powders		203 /MT		1x25 m
Transparent		204 /10	mm 6 ÷ 10	500
TRASP, PLOTTER SYSTEM, SI2K		204 /15		500
		204 /23		200
		204 /30		200
		204 /MT		1x25 m
		205 /10	mm 10 ÷ 14	200
		205 /15		200
		205 /23		200
		205 /30		200
		205 /MT		40x0,5 m
		206 /10	mm 14 ÷ 22	200
		206 /15		200
		206 /23		100
		206 /30		100
		206 /MT		40x0,5 m
		207 /10	mm 22 ÷ 30	50
		207 /15		50
		207 /23		50
		207 /30		50
		207 /MT		20x0,5 m
		208 /10	mm 30 ÷ 35	50
		208 /15		50
		208 /23		50
		208 /30		50
		208 /MT		20x0,5 m
		209 /10	mm 35 ÷ 40	50
		209 /15		50
		209 /23		50
		209 /30		50
		209 /MT		20x0,5 m

## Transparent sleeve 200 Series

The 200 series sleeves are more pliable than the 100 series. They are designed to cater for a wider range of cables and cores but with fewer items.

This is particularly useful when different size cables have to be marked, greatly reducing warehouse stocks.





#	300	#	Ø	📦
		301 /10	mm 2 ÷ 3,5	1.000
		301 /15	mm 2 ÷ 3,5	1.000
		301 /23	mm 2 ÷ 3,5	500
		301 /30	mm 2 ÷ 3,5	500
		302 /10	mm 2,8 ÷ 5	1.000
		302 /15	mm 2,8 ÷ 5	1.000
		302 /23	mm 2,8 ÷ 5	500
		302 /30	mm 2,8 ÷ 5	500
		303 /10	mm 5 ÷ 8	500
		303 /15	mm 5 ÷ 8	500
	303 /23	mm 5 ÷ 8	200	
	303 /30	mm 5 ÷ 8	200	
	304 /10	mm 8 ÷ 10	500	
	304 /15	mm 8 ÷ 10	500	
	304 /23	mm 8 ÷ 10	200	
	304 /30	mm 8 ÷ 10	200	
	mm 10 ÷ 15 ÷ 23 ÷ 30			
	PVC			
	UL-94 Class V0			
	-50 ÷ +80°C			
	Acids ÷ Water ÷ Oils ÷ Powders			
	Transparent / White			
	TRASP, PLOTTER SYSTEM, SI2K			

LEGEND

## Snap-on sleeve

The snap-on sleeve is composed of one rigid part that snaps onto the cable, and a soft, transparent part designed to hold the marking elements.

Particularly suitable for marking after the electrical connection has been made.

By saving a considerable amount of time, this product appreciably reduces installation costs.



#	710-711	#					
		<b>710 / 05</b>	mm <sup>2</sup> 0,5	mm 9	Orange	200	
		<b>710 / 07</b>	mm <sup>2</sup> 0,75	mm 9	Neutral	200	
		<b>710 / 10</b>	mm <sup>2</sup> 1,0	mm 9	Yellow	200	
		<b>710 / 15</b>	mm <sup>2</sup> 1,5	mm 9	Red	200	
		<b>710 / 25</b>	mm <sup>2</sup> 2,5	mm 12	Blue	200	
		<b>710 / 40</b>	mm <sup>2</sup> 4	mm 12	Grey	100	
		<b>710 / 60</b>	mm <sup>2</sup> 6	mm 12	Green	100	
		<b>710 / 100</b>	mm <sup>2</sup> 10	mm 12	Brown	100	
		<b>A</b> PVC	<b>B</b> E - CU				
		UL-94 Class V0					
	-50 ÷ +80°C						
	Acids ÷ Water ÷ Oils ÷ Powders						
	<b>A</b> Transparent/Coloured						
	TRASP, PLOTTER SYSTEM, SI2K						

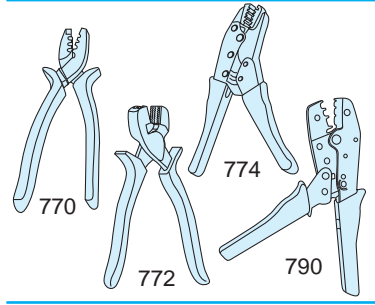
## SPARK pin terminal

SPARK is a crimpable pin terminal fitted with a swivelling marker sleeve that can be turned in order to improve visibility especially in PLC boxes where space is limited.

SPARK offers the advantage of a combined cable-end connector and marker sleeve, with a consequent saving in warehouse stocks and increased speed of application.



### Crimping tool



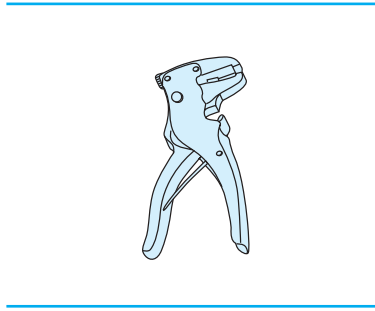
#			
770	mmq 0,50 ÷ 16	710/711	1
772	mmq 0,25 ÷ 6	710/711	1
774	mmq 0,50 ÷ 16	710/711	1
790	mmq 0,25 ÷ 6	720/730	1

These are pliers for attaching the SPARK terminals to the wires. Article 774 includes a ratchet that makes the work less tiring for the operator.



### Wire stripper

### TRASP SYSTEM



#	
780	1

This tool strips the insulating sheath from wires to prepare them for SPARK crimping.

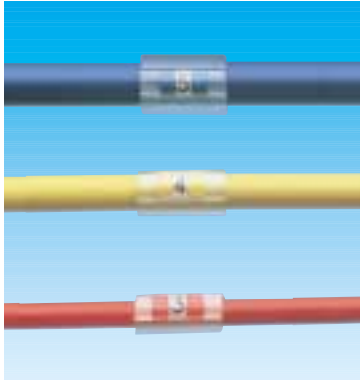
LEGEND



#	802	808÷811	#	Ø	📦
			802 /15	mm 2 ÷ 4	500
			802 /30		200
			802 /MT		1 x 25 m
			808 /10	mm 8 ÷ 10	100
			808 /15		100
			808 /23		50
			808 /30		50
			808 /MT		40 x 0,5 m
	mm 15 ÷ 23 ÷ 30 ÷ 500 ÷ 25.000		809 /10	mm 10 ÷ 12	100
	PVC		809 /15		100
	UL-94 Class V0		809 /23		50
	-50 ÷ +80°C		809 /30		50
	Acids ÷ Water ÷ Oils ÷ Powders		809 /MT		40 x 0,5 m
	Transparent		810 /10	mm 12 ÷ 14	100
	TRASP, PLOTTER SYSTEM, SI2K		810 /15		100
			810 /23		50
			810 /30		50
			810 /MT		40 x 0,5 m
			811 /10	mm 14 ÷ 16	50
			811 /15		50
			811 /23		20
			811 /30		20
			811 /MT		40 x 0,5 m

## Dual recessed sleeve

The dual recessed sleeve makes it possible to mark a cable quickly and accurately with the identification marks set out in two rows and can be used for source/destination marking. Article 802 makes it possible to read the markers clearly from either side of the cable.



#	900HF	930HF	#	Ø	
	mm 10 ÷ 15 ÷ 23 ÷ 30		901HF /10	mm 0,9 ÷ 1,6	1.000
	PT (# 900HF)	PE (# 903HF)	901HF /15		1.000
	-40 ÷ +80 °C		901HF /23		500
	Acids ÷ Water ÷ Oils ÷ Powders		901HF /30		500
	Transparent light blue		902HF /10	mm 1,4 ÷ 5	1.000
	TRASP, PLOTTER SYSTEM, SI2K		902HF /15		1.000
			902HF /23		500
			902HF /30		500
			903HF /10	mm 5 ÷ 11	500
			903HF /15		500
			903HF /23		200
			903HF /30		200
			930HF /30		200

LEGEND

### Halogen-free sleeve

This sleeve does not release halogenous substances if burned, and is therefore used in high-risk installations.

### Halogen-free sleeve for straps

This is the simplest solution for marking cables bundled with a cable-tie.



#			
	mm		
005 RK	470x170x50		1
006	145x25	100 / 200 / 300 / 900	50

### Ready Kit

Ready Kit is a practical container for transporting 700 ready-made sleeves, stored in 50 portable mountings (#006), to the place of application.

## TRASP SYSTEM



## Starter Kit

These introductory kits for the TRASP system offer a selection of products

#	001SK/01	001SK/02	001SK/03	001SK/04	001SK/08
012 A	1	012 A	1	013 A	1
117G00BW	10	117M00BW	10	117M00BW	10
117G01BW	10	117M01BW	10	117M01BW	10
117G02BW	10	117M02BW	10	117M02BW	10
117G03BW	10	117M03BW	10	117M03BW	10
117G04BW	10	117M04BW	10	117M04BW	10
117G05BW	10	117M05BW	10	117M05BW	10
117G06BW	10	117M06BW	10	117M06BW	10
117G07BW	10	117M07BW	10	117M07BW	10
117G08BW	10	117M08BW	10	117M08BW	10
117G09BW	10	117M09BW	10	117M09BW	10
117GAABW	10	117MAABW	10	117MAABW	10
117GBBBW	10	117MBBBW	10	117MBBBW	10
117GCCBW	10	117MCCBW	10	117MCCBW	10
117GDDBW	10	117MDDBW	10	117MDDBW	10
117GEEBW	10	117MEEBW	10	117MEEBW	10
117GFFBW	10	117MFFBW	10	117MFFBW	10
117GGGBW	10	117MGGBW	10	117MGGBW	10
117GHHBW	10	117MHBBW	10	117MHBBW	10
117GIIBW	10	117MIIBW	10	117MIIBW	10
117GJJBW	10	117MJJBW	10	117MJJBW	10
117GKKBW	10	117MKKBW	10	117MKKBW	10
117GLLBW	10	117MLLBW	10	117MLLBW	10
117GMMBW	10	117MMMBW	10	117MMMBW	10
117GNNBW	10	117MNNBW	10	117MNNBW	10
117GPPBW	10	117MPPBW	10	117MPPBW	10
117GQQBW	10	117MQQBW	10	117MQQBW	10
117GRRBW	10	117MRRBW	10	117MRRBW	10
117GSSBW	10	117MSSBW	10	117MSSBW	10
117GTTBW	10	117MTTBW	10	117MTTBW	10
117GUUBW	10	117MUUBW	10	117MUUBW	10
117GVVBW	10	117MVVBW	10	117MVVBW	10
117GWWBW	10	117MWWBW	10	117MWWBW	10
117GXXBW	10	117MXXBW	10	117MXXBW	10
117GYYSW	10	117MYYSW	10	117MYYSW	10
117GZZBW	10	117MZZBW	10	117MZZBW	10
117G10BW	10	117M10BW	10	117M10BW	10
117G11BW	10	117M11BW	10	117M11BW	10
117G12BW	10	117M12BW	10	117M12BW	10
117G13BW	10	117M13BW	10	117M13BW	10
117GOOBW	10	117MOOBW	10	117MOOBW	10
117G999B	10	117M999B	10	117M999B	10
117G999R	10	117M999R	10	117M999R	10
117G999G	10	117M999G	10	117M999G	10
117G999Y	10	117M999Y	10	117M999Y	10
117G999U	10	117M999U	10	117M999U	10
202/15	1.000	202/15	1.000	102/15	1.000
Sample		Sample		Sample	
T-Shirt	1	T-Shirt	1		

#		
001SK	mm 280x320x170	1



## Micro Kit

Available in two version this is the smallest portable kit ITEM 003A includes the tools needed for identification using the TRASP system. ITEM 003C also includes a selection of marking

#	003A		003C /01		003C /02	
		118	1	118	1	118
	119M/15U	1	119M/15U	1	119M/15U	1
			117M00BW	1	117M00BW	1
			117M01BW	1	117M01BW	1
			117M02BW	1	117M02BW	1
			117M03BW	1	117M03BW	1
			117M04BW	1	117M04BW	1
			117M05BW	1	117M05BW	1
			117M06BW	1	117M06BW	1
			117M07BW	1	117M07BW	1
			117M08BW	1	117M08BW	1
			117M09BW	1	117M09BW	1
			117MAABW	1	117MAABW	1
			117MBBBW	1	117MBBBW	1
			117MCCBW	1	117MCCBW	1
			117MEEBW	1	117MEEBW	1
			117MLLBW	1	117MLLBW	1
			117MNNBW	1	117MNNBW	1
			117MRRBW	1	117MRRBW	1
			117MSSBW	1	117MSSBW	1
			117MTTBW	1	117MTTBW	1
			117MVVBW	1	117MVVBW	1
			117M10BW	1	117M10BW	1
			117M11BW	1	117M11BW	1
			117M13BW	1	117M13BW	1
			117M999W	1	117M999W	1
			117M999R	1	117M999R	1
			103/15	50	103/15	50
			108/15	20	108/15	20
			130/23	50	130/23	50
			140/15	50	140/15	50
			301/15	50	301/15	50
			302/15	50	302/15	50
			710/15	50	710/15	50
			720/B5	20	710/25	20
			730/R4	20	730/R4	20
					UN 2I	2

#	mm	
003...	170x210x75	1

LEGEND



## Trasp Box

This is a convenient portable kit. Provided with an accessory for wall mounting.  
ITEM 012C also includes a selection of marking elements and holders

#	012A	012C/01	012C/03	013A		
	118	1	118	1	118	2
	119/15U	1	119/15U	1	119/15U	1
	119/30U	1	119/30U	1	119/30U	1
	120	1	120	1	120	1
			117G00BW	1	117M00BW	3
			117G01BW	1	117M01BW	3
			117G02BW	1	117M02BW	3
			117G11BW	1	117M03BW	2
			117G03BO	1	117M04BW	2
			117G999O	1	117M05BW	1
			117G999R	1	117M06BW	1
			117GAARW	1	117M07BW	1
			117GEERW	1	117M08BW	1
			117GSSRW	1	117M09BW	1
			117M01WN	1	117M10BW	1
			117M02WR	1	117M11BW	1
			117M03BW	1	117M13BW	1
			117M04BW	1	117MAABW	1
			117M05BW	1	117MBBBW	1
			117M10BW	1	117MCCBW	1
			117M999G	1	117MDDBW	1
			117M999W	1	101/15	70
			117MCCBY	1	101/30	25
			117MTTBY	1	102/15	70
			117MVBVY	1	102/30	30
			117P06BW	1	103/15	60
			117P07BW	1	103/30	30
			117P08BW	1	104/15	60
			117P13BW	1	104/30	30
			130/23	5	140/15	1
			130/30	5	140/30	1
			140/15	10	142/15	1
			175D/15	3	142/30	1
			175E/15	3	175L/15	3
			175L/15	3	301/15	10
			185G/20	3	302/15	10
			185M/20	3	303/30	5
			190/10	30	304/30	5
			190/15	30	840/15	1
			202/15	100	840/30	1
			301/15	5		
			302/15	5		
			303/30	5		
			304/30	5		
			710/15	40		
			710/60	20		
			808/15	30		
			830/30	5		
			840/23	10		

	mm	
012/013	234x180x90	1





## Trasp Case

Available in three versions, designed to hold assorted TRASP system items. ITEM 050A includes the tools needed for identification using the TRASP System. ITEM

#	050A	050C/01	050C/03	050C/04	
118	2	118	2	118	2
119M/15U	1	119M/15U	1	119M/15U	1
119M/30U	1	119M/30U	1	119M/30U	1
120	1	120	1	120	1
		117G00BW	2	117M00BW	4
		117G01BW	2	117M01BW	4
		117G02BW	2	117M02BW	4
		117G03BW	2	117M03BW	2
		117G11BW	2	117M04BW	2
		117G999O	2	117M05BW	2
		117G999R	2	117M06BW	2
		117GAARW	2	117M07BW	2
		117GEERW	2	117M08BW	2
		117GSSRW	2	117M09BW	2
		117M01WN	2	117MAABW	2
		117M02WR	2	117MBBBW	2
		117M03BW	2	117MCCBW	2
		117M04BW	2	117MDDBW	2
		117M05BW	2	117MEEBW	2
		117M10BW	2	117MFFBW	2
		117M999G	2	117MGGBW	2
		117M999W	2	117MHHBW	2
		117MIICBY	2	117MIIBW	2
		117MTTBY	2	117MJJBW	2
		117MVVBY	2	117MKKBW	2
		117P06BW	2	117MLLBW	2
		117P07BW	2	117MMMBW	2
		117P08BW	2	117MNNBW	2
		117P13BW	2	117MOOBW	2
		103/15	60	117MPPBW	2
		121X/23	2	117MQQBW	2
		122X/23	2	117MRRBW	2
		124/15	2	117MSSBW	2
		130/23	20	117MTTBW	2
		130/30	20	117MUUBW	2
		140/15	20	117MVVBW	2
		140/30	20	117MWWBW	2
		160/25	1	117MXXBW	2
		161/25	1	117MYYBW	2
		175D/15	3	117MZZBW	2
		175E/15	3	117M10BW	2
		175L/15	3	117M11BW	2
		185G/20	3	117M12BW	2
		185M/20	3	117M13BW	2
		190/10	50	117M14BW	1
		190/15	50	117M29BW	2
		202/15	100	117M33BW	1
		301/15	10	117M999B	2
		302/15	10	117M999G	2
		303/30	10	117M999O	1
		304/30	10	117M999R	2
		710/07	40	117M999U	2
		710/10	40	117M999W	2
		710/15	40	117M999Y	2
		710/40	40	103/15	160
		710/60	20	102/15	80
		710/100	20	103/15	90
		808/15	40	108/15	40
		830/30	20	121/23	2
		840/15	20	122/30	2
				124/15	2
				140/15	20
				140/30	20
				160/25	1
				161/25	1
				190/05	50
				190/10	30
				190/15	30
				301/15	30
				302/15	30
				303/30	15
				304/30	15
				710/07	50
				710/15	50
				710/25	50
				103/15	200
				105/15	150
				106/15	50
				130/30	30
				140/15	60
				140/30	30
				302/15	80
				303/30	15
				304/30	15
				710/15	60
				710/25	60

#	mm	1
050...	350x80x250	1

## TRASP SYSTEM



#	📦	☀️
<b>MS005TP *</b>	1	1 Display stand 2150x750x470 mm 4 rows with 10 hooks for holding TRASP blister packs 1 row with 4 hooks for holding MICROKIT
<b>MS005GK *</b>	1	1 Display stand 2150x750x470 mm 5 Pockets for holding GRAFOMARK labels
<b>MS005GT *</b>	1	1 Display stand 2150x750x470 mm 5 rows with 4 hooks for holding GRAFIT dispenser
<b>MS005MX *</b>	1	1 Display stand 2150x750x470 mm 1 row with 10 hooks for holding TRASP blister packs 1 row with 4 hooks for holding MICROKIT 1 row with 4 hooks for holding GRAFIT dispenser 2 Pockets for holding GRAFOMARK labels

### Mark Shop

The MARK SHOP comes in five different display variations. Taking its example from modern selling methods, the MARK SHOP is a practical light blue display-stand mounted on castors for easy movement within the sales area. It displays the various products, such as strips, strip containers, sleeves and dispensers, and also kits. Thanks to its compact size, the modular hooks for blisters, pockets and the basket for non-blistered articles, this SHOP can be used both for intelligent sales support and as an alternative solution to storing stock on shelves.

\* On request, available complete with products.